

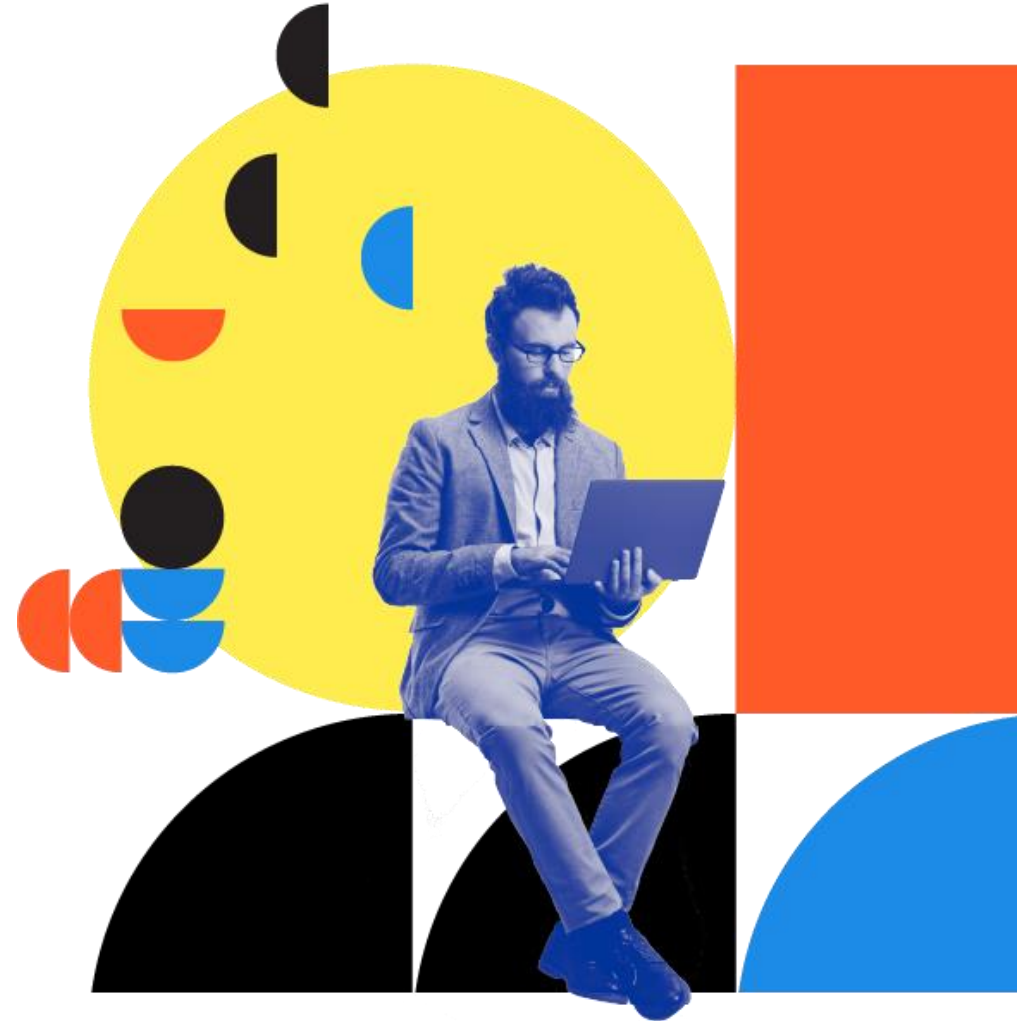
# FortiGate SD-WAN & FortiManager

Aaron Moreck

Director of Networking Services

October 2, 2024

**FORTINET**



# What is SD-WAN

WAN Architecture that allows the intelligent use of multiple transports to provide connectivity to on-prem and cloud-based applications

- Central Management
- Templating
- Intelligence
- Redundancy
- Monitoring
- Cost Savings





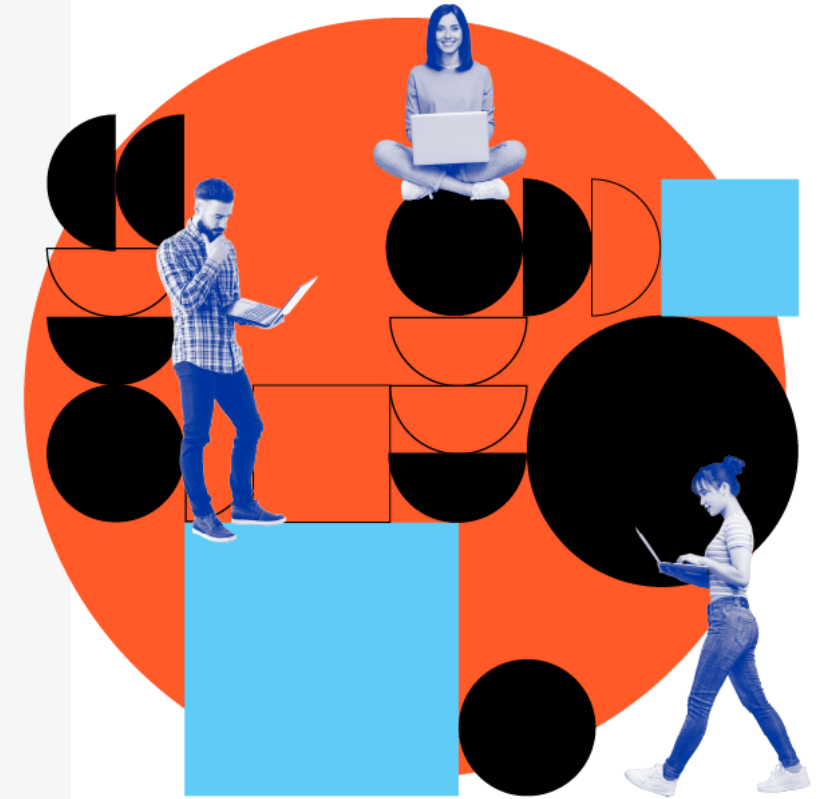
# Traditional WAN vs SD-WAN

## Traditional

- Manual Configuration
- Single Active Path
- Typically used higher cost circuits
- Manual Load Balancing

## SD-WAN

- Automated Configuration
- Multiple Active Paths
- Leverage Internet or lower cost circuits
- Intelligent Load Balancing



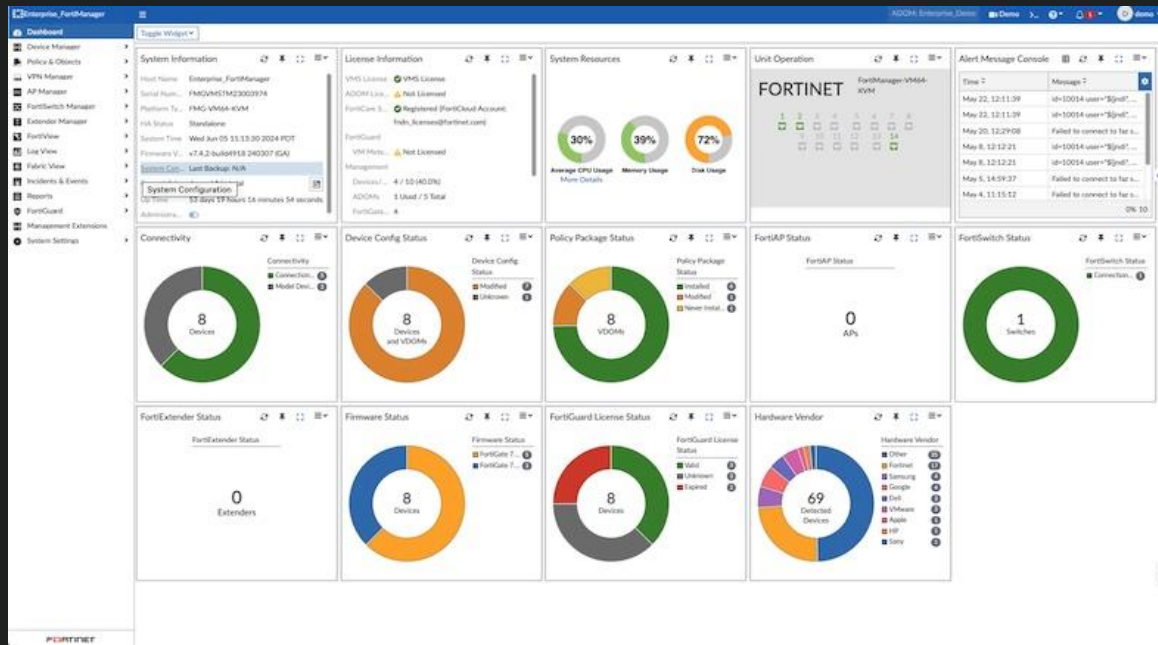
# FortiGate

## Components

- FortiGate



# FortiManager

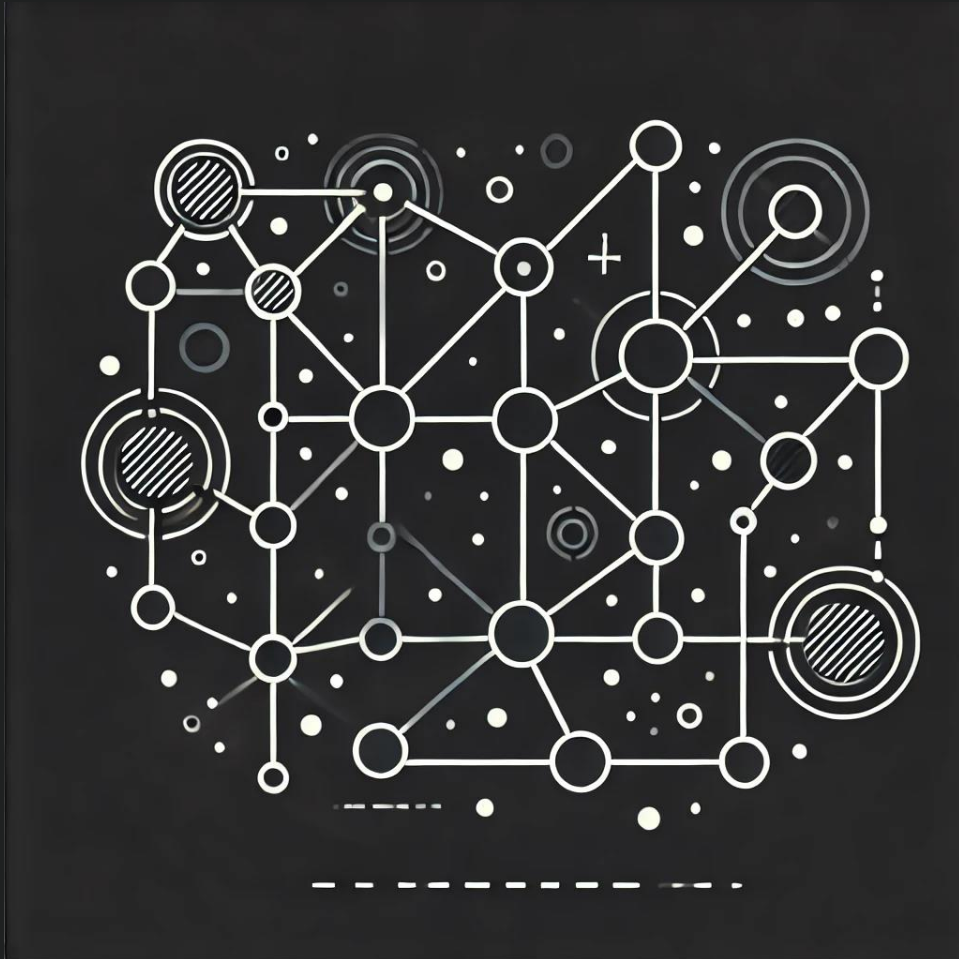


# Components

- FortiGate
- FortiManager



# Transport



# Components

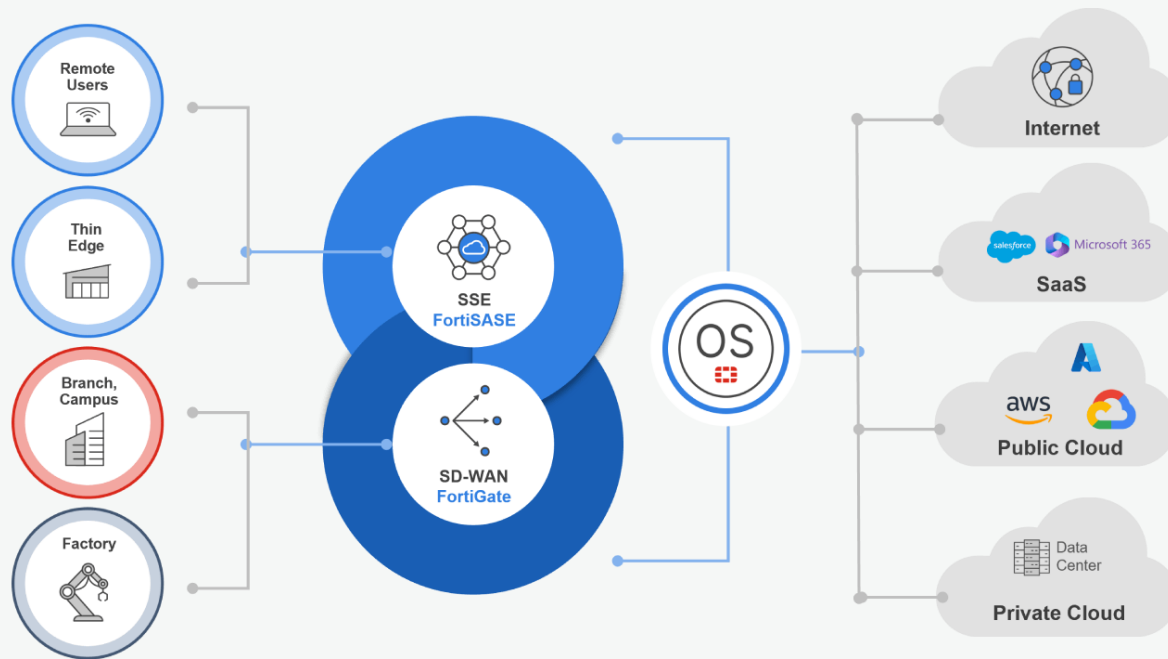
- FortiGate
- FortiManager
- Transport





# FortiNet SASE

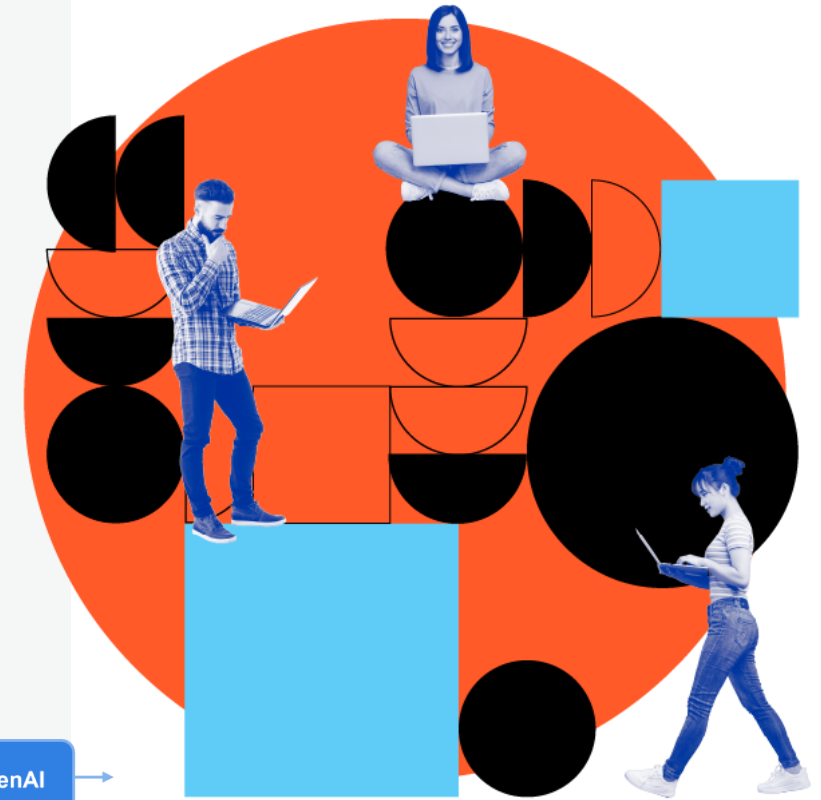
## Secure Access Service Edge



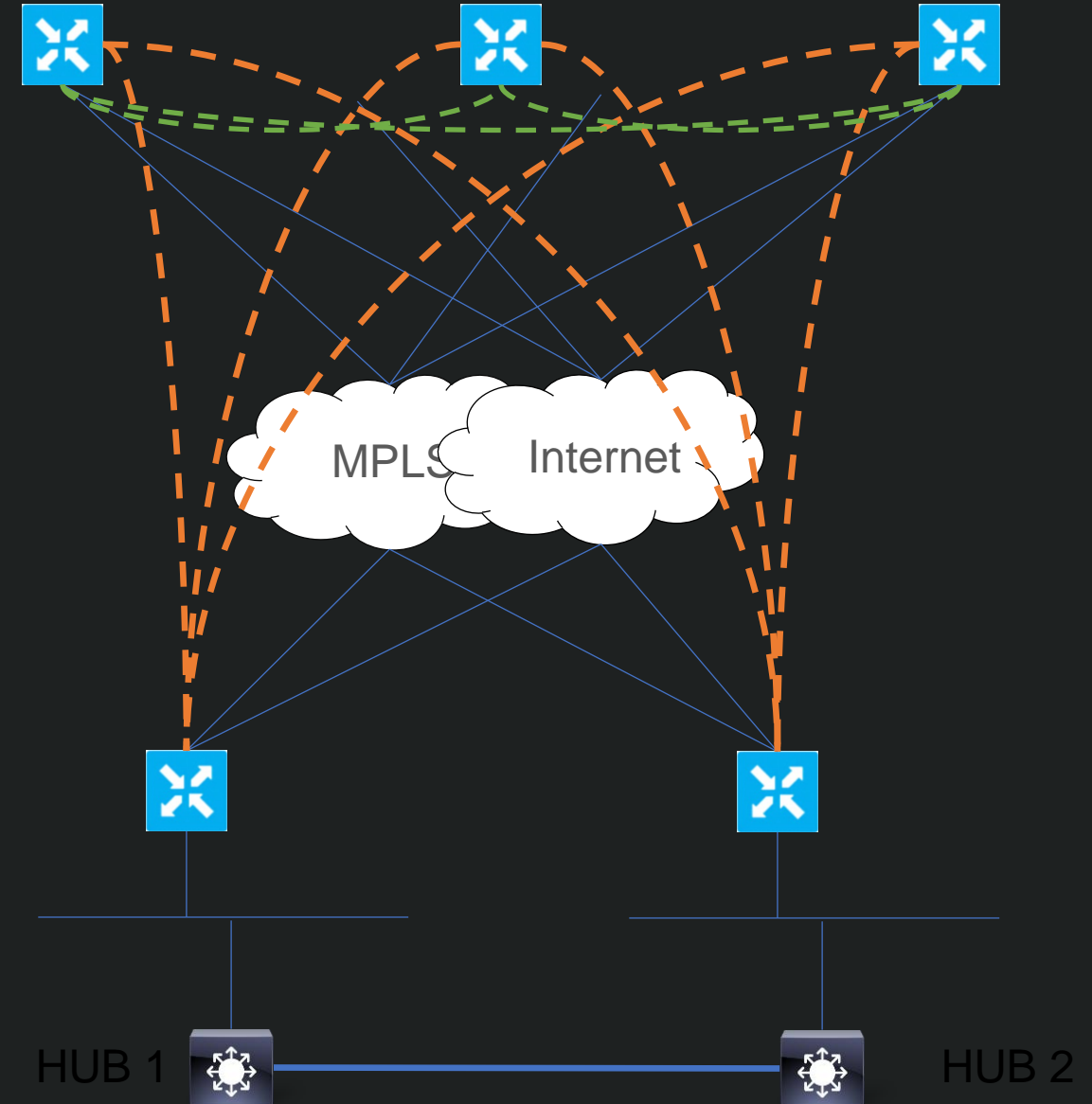
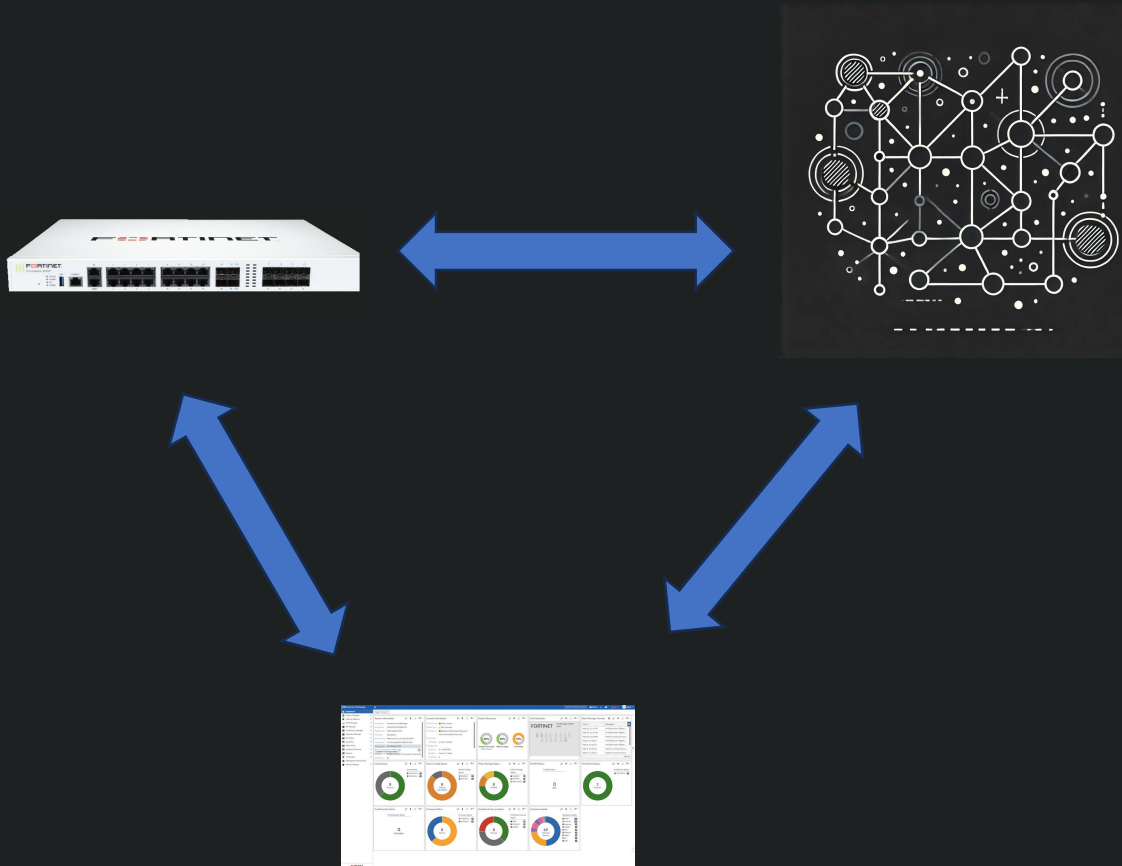
Unified – One console, agent, data lake

Flexible - Enforcement, connectivity

Intelligent - AI-powered security, GenAI



# Putting It All Together

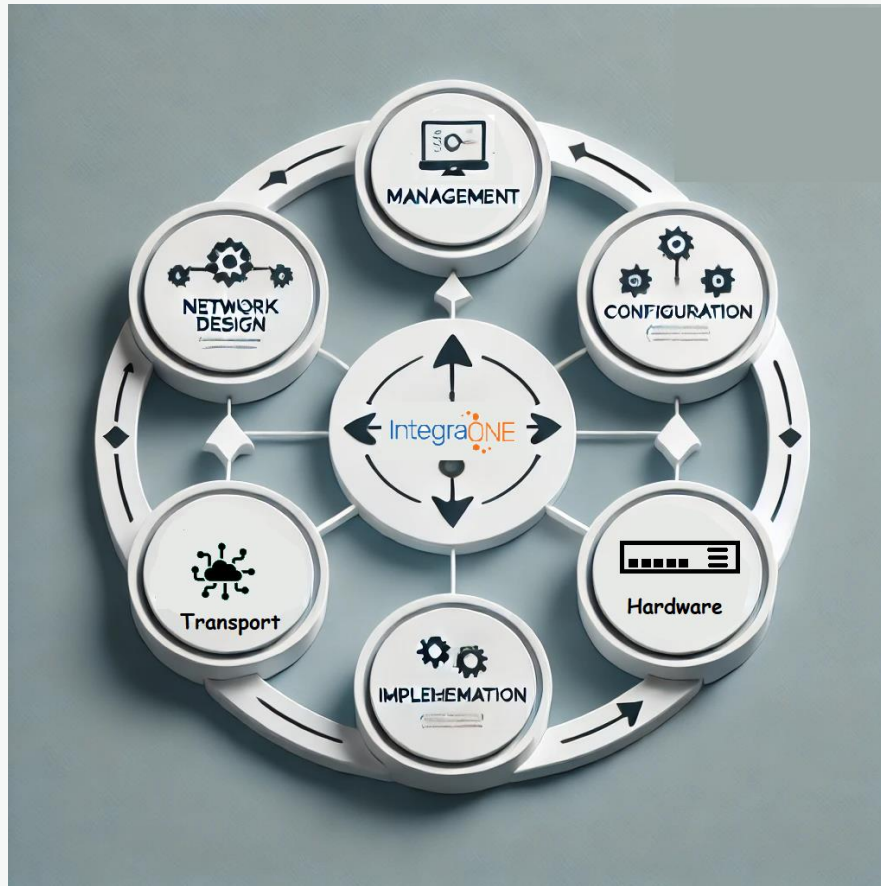






# End to End Solution

Delivered by IntegraONE



# Q&A